

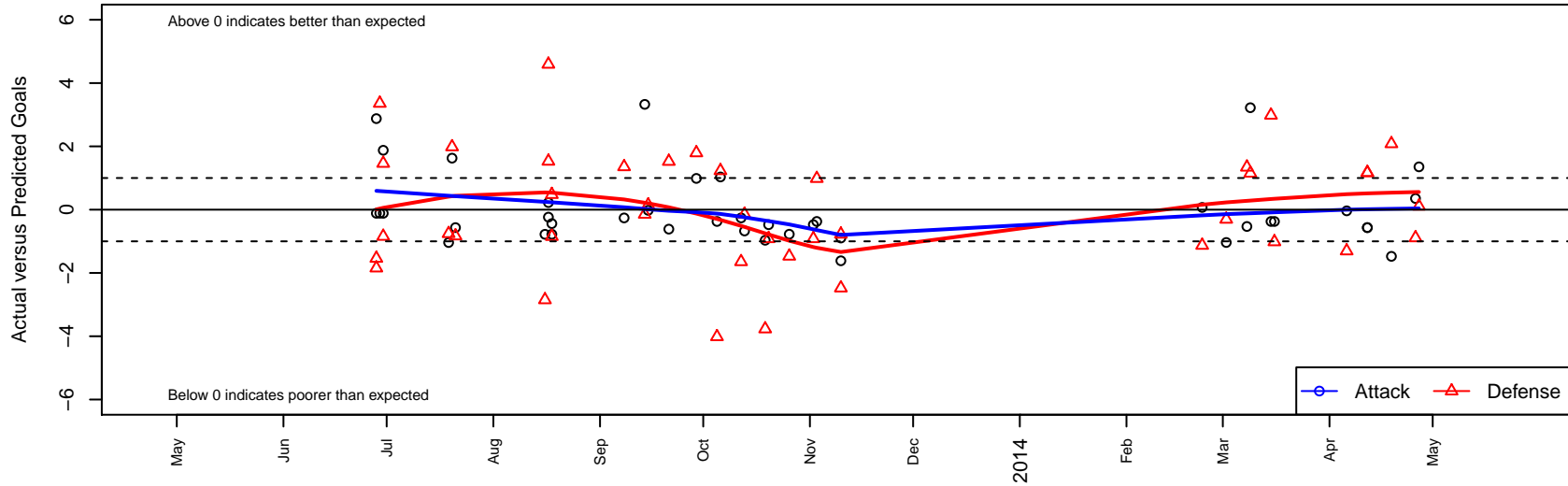
# Westside Timbers Mundial TS G02

Westside Timbers  
 Beaverton, OR  
 G02 total strength=-10  
 attack=0.08 defense=0.05  
 fall league = OPL Second Division U11, OPL D  
 alt names used:  
 WT 02 Mundial TS  
 WT G02 Mundial TS  
 Westside Timbers G02 Mundial TS

Venues played:  
 Capital Cup GU11 8v8  
 Beaverton Cup GU11 Silver  
 Mt Hood Challenge GU11 11v11 Silver  
 OPL Second Division U11  
 OPL Directors Cup Silver U11  
 Spr OYS G02 Spring Red  
 OYS Presidents Cup G02



**Westside Timbers Mundial TS G02**  
 Dots are actual minus expected GF (blue circles) and GA (red triangles).  
 Blue line is smoothed change in attack strength. Red is smoothed change in defense strength.



	date	home		away		venue	pred.home	pred.away
3796	2014-04-27	W AFC Rain G02	6	Westside Timbers Mundial TS G02	2	Spr OYS G02 Spring Red	6.11	0.65
3765	2014-04-26	W AFC Rain G02	7	Westside Timbers Mundial TS G02	1	OYS Presidents Cup G02	6.11	0.65
3737	2014-04-19	Westside Timbers Mundial TS G02	0	Capital FC Timbers Black G02	0	OYS Presidents Cup G02	1.47	2.08
3684	2014-04-12	Westside Timbers Samba G02	2	Westside Timbers Mundial TS G02	0	OYS Presidents Cup G02	3.17	0.57
3686	2014-04-12	Westside Timbers Samba G02	2	Westside Timbers Mundial TS G02	0	OYS Presidents Cup G02	3.17	0.57
3666	2014-04-06	Westside Timbers Mundial TS G02	1	Eastside Timbers Black G02	4	Spr OYS G02 Spring Red	1.04	2.70
3501	2014-03-16	BSC Portland Gold G02	4	Westside Timbers Mundial TS G02	0	Spr OYS G02 Spring Red	2.98	0.37
3467	2014-03-15	Westside Timbers Mundial TS G02	0	BSC Portland Gold G02	0	Spr OYS G02 Spring Red	0.37	2.98
3412	2014-03-09	Westside Timbers Mundial TS G02	4	Washington Timbers Forest G02	3	Spr OYS G02 Spring Red	0.78	4.15
3377	2014-03-08	Westside Timbers Mundial TS G02	0	Westside Timbers Samba TS G02	3	Spr OYS G02 Spring Red	0.53	4.34
3328	2014-03-02	Eastside Timbers Black G02	3	Westside Timbers Mundial TS G02	0	Spr OYS G02 Spring Red	2.70	1.04
3241	2014-02-23	PCU Red G02	3	Westside Timbers Mundial TS G02	2	Spr OYS G02 Spring Red	1.87	1.93
2746	2013-11-10	Westside Timbers Mundial TS G02	0	THUSC Obsidian G02	4	OPL Directors Cup Silver U11	1.62	1.52
2748	2013-11-10	NEU Noreaster Blue G02	2	Westside Timbers Mundial TS G02	0	OPL Directors Cup Silver U11	1.22	0.90
2614	2013-11-03	BSC Portland Gold G02	2	Westside Timbers Mundial TS G02	0	OPL Directors Cup Silver U11	2.98	0.37
2542	2013-11-02	Capital FC Timbers Black G02	3	Westside Timbers Mundial TS G02	1	OPL Directors Cup Silver U11	2.08	1.47
2405	2013-10-26	Crossfire OR WUSC Atletico Navy G02	3	Westside Timbers Mundial TS G02	0	OPL Second Division U11	1.53	0.78
2343	2013-10-20	Westside Timbers Mundial TS G02	1	Capital FC Timbers Black G02	3	OPL Second Division U11	1.47	2.08
2272	2013-10-19	Crossfire OR LOSC Mayhem G02	6	Westside Timbers Mundial TS G02	0	OPL Second Division U11	2.23	0.97
2187	2013-10-13	PCU Black G02	1	Westside Timbers Mundial TS G02	3	OPL Second Division U11	0.85	3.67
2124	2013-10-12	Westside Timbers Mundial TS G02	2	Thelo Thunder G02	3	OPL Second Division U11	2.26	1.35
2017	2013-10-06	Westside Timbers Mundial TS G02	2	Crossfire OR LOSC Mayhem G02	1	OPL Second Division U11	0.97	2.23
1925	2013-10-05	BSC Portland Gold G02	7	Westside Timbers Mundial TS G02	0	OPL Second Division U11	2.98	0.37
1826	2013-09-29	Westside Timbers Mundial TS G02	2	Crossfire OR SSC Force G02	0	OPL Second Division U11	1.01	1.79
1602	2013-09-21	THUSC Obsidian G02	0	Westside Timbers Mundial TS G02	1	OPL Second Division U11	1.52	1.62
1506	2013-09-15	Westside Timbers Mundial TS G02	2	FC Salmon Creek Nemesis Blue G02	1	OPL Second Division U11	2.02	1.15
1436	2013-09-14	Westside Timbers Mundial TS G02	7	PCU Black G02	1	OPL Second Division U11	3.67	0.85
1340	2013-09-08	Thelo Thunder G02	0	Westside Timbers Mundial TS G02	2	OPL Second Division U11	1.35	2.26

	<b>date</b>	<b>home</b>		<b>away</b>		<b>venue</b>	<b>pred.home</b>	<b>pred.away</b>
1000	2013-08-18	Washington Timbers Forest G02	5	Westside Timbers Mundial TS G02	0	Mt Hood Challenge GU11 11v11 Silver	4.15	0.78
1010	2013-08-18	HSC Blaze G02	2	Westside Timbers Mundial TS G02	1	Mt Hood Challenge GU11 11v11 Silver	2.48	1.44
942	2013-08-17	Westside Timbers Mundial TS G02	0	Crossfire Premier B G02	7	Mt Hood Challenge GU11 11v11 Silver	0.24	11.59
958	2013-08-17	Crossfire OR WUSC Atletico Navy G02	0	Westside Timbers Mundial TS G02	1	Mt Hood Challenge GU11 11v11 Silver	1.53	0.78
902	2013-08-16	Washington Timbers Forest G02	7	Westside Timbers Mundial TS G02	0	Mt Hood Challenge GU11 11v11 Silver	4.15	0.78
458	2013-07-21	Westside Timbers Mundial TS G02	0	Westside Timbers Samba G02	4	Beaverton Cup GU11 Silver	0.57	3.17
399	2013-07-20	Westside Timbers Mundial TS G02	2	BSC Portland Gold G02	1	Beaverton Cup GU11 Silver	0.37	2.98
370	2013-07-19	THUSC Sapphire G02	3	Westside Timbers Mundial TS G02	0	Beaverton Cup GU11 Silver	2.24	1.04
240	2013-06-30	AYSO Lebanon United G02	1	Westside Timbers Mundial TS G02	5	Capital Cup GU11 8v8	2.46	3.12
242	2013-06-30	Southside Fireballs G02	4	Westside Timbers Mundial TS G02	1	Capital Cup GU11 8v8	3.16	1.11
213	2013-06-29	Albany FC Heat G03	3	Westside Timbers Mundial TS G02	1	Capital Cup GU11 8v8	6.36	1.11
189	2013-06-28	Westside Timbers Mundial TS G02	1	Southside Fireballs G02	5	Capital Cup GU11 8v8	1.11	3.16
190	2013-06-28	Westside Timbers Mundial TS G02	6	AYSO Lebanon United G02	4	Capital Cup GU11 8v8	3.12	2.46